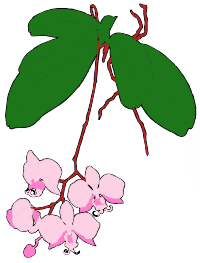


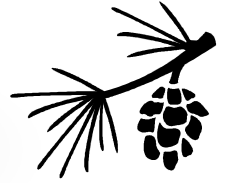
January 2010



Pinelands Orchid Society

www.pinelandsorchidsociety.org

P.O. Box 954 - Voorhees, NJ 08043



From the Officers & Trustees

The 2010 Philadelphia International Flower Show *Passport to the World*

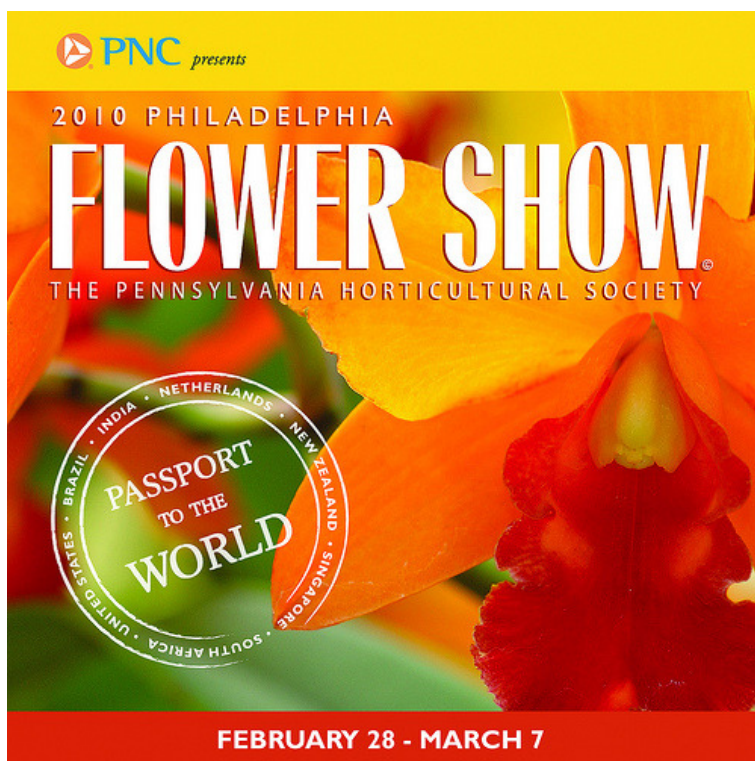
The upcoming Flower Show is going to be a special one on many levels. Most obvious is the name change. In 2010, PHS will present the Philadelphia *International* Flower Show, an acknowledgement of the Show's global scope, participation, and reputation, which have been growing for years.

The internationally inclusive Flower Show is also meant to include you, the first-time exhibitor with one plant or the experienced exhibitor with many entries. Competing in the Horticult, the mini-Olympics of horticulture, is an experience you'll never forget!

For easy guidance on how to be a part of the 2010 Show, you can go to the official Show web site and download the *Exhibitor's Guide* and the step-by-step *User's Guide* for registering your plants online. Pre-registering your plants by January 31st is strongly encouraged so that your official entry cards can be prepared in advance. In addition, you will receive a mailing from PHS in advance of the Show with instructions for where and when to bring your plants on entry days.

To go directly to the Flower Show site to view the *Exhibitor's Guide* and *User's Guide*, go to:

<http://www.theflowershow.com/Exhibits/ccinfo.html>



Monthly Meeting Reminder Meeting Reminder

The next meeting of the Pinelands Orchid Society will take place on **Tuesday, January 5th, 2010** at Medford Leas, 1 Medford Leas Way, Medford, NJ 08055



Doors will be open to accept Show Table plants at 7:00 p.m.

Please Remember!

Show Table plants, along with their completed Show Table slips, **must be on the Show Tables by 7:30 sharp** in order to be eligible for ribbon judging!

If your last name begins with the letters **A** through **H** please bring a snack to share! The society will provide hot and cold beverages.



The Orchid Calendar

- **Tuesday, January 5th—Pinelands Orchid Society’s monthly meeting** at 7:30 p.m. at Medford Leas. You won’t want to miss our 1st meeting of 2010! We are pleased to welcome once again David Off of Waldor Orchids to share with us his knowledge of the genus *Cattleya*.
- **January 16—24—J & L Orchids’ Annual January Thaw Sale** at the greenhouse: 20 Sherwood Road, Easton, Connecticut. Everything is 20% off! For details, call (203) 261-3772 or go online to www.jlorchids.com.



Anita McGann and Duane Erdman admiring an orchid from the genus *Restrepia* at our November meeting.

- **January 31st—Deadline** for online pre-registration for The Philadelphia International Flower Show.
- **Tuesday, February 2nd—Pinelands Orchid Society’s monthly meeting** at 7:30 p.m. at Medford Leas. Program to be announced.
- **February 4th thru February 7th—Deep Cut Orchid Society’s Show & Sale** at Dearborn Market, Holmdel, NJ, 10 a.m. to 6 p.m. For more information, go online to: <http://sites.google.com/site/deepcutorchids/Home>.
- **February 28th—March 7th—2010 Philadelphia International Flower Show.**

Pinelands Orchid Society Officers, Trustees, and Committee Members 2009-2010

President
 Bayard Saraduke
 856-303-1662
bayard1@comcast.net

Vice President
VACANT

Secretary
 Pat Eastwood
flower50@comcast.net

Treasurer
 John DeGood
 (609) 324-4448
jdegood@comcast.net

Trustees
 Christine Jacoby
 Ro Hill
 Marie Wann

Speakers/Programs
VACANT

Newsletter
 Christine Jacoby
 609-220-3210
rojji@comcast.net

Monthly Meeting Raffle
 Florence Lon
cheeky_bugger@hotmail.com

Show Table Committee
 Bob Taylor
 Bob & Sherron Davis
 Photography: Mike Scott

Members’ Sale Plants
 Delores Collier

Show Committee
VACANT


**Web Site/Library/
 Name Tags**
 John DeGood

Orchid Supplies
 Suzanne Halpern
shalpern@schnader.com

Sunshine Broker
 Anita McGann
 (856) 779-0643

**Meeting Site Coordinator/
 Audio-Visual Mgr.**
 John Ceresani
ceresani@comcast.net

**Hospitality/
 Refreshments**
 Bob Bookbinder
 Anita & Bob McGann


Sunshine Broker

If you know of any member who would appreciate receiving a “get well” note or condolence card during the year, please let Anita McGann know.

Anita can be reached at (856)779-0643.
rsm51402121@yahoo.com



*Dedicated to Quality
Since 1957*

22nd Annual Open House

Thursday, January 28th- Sunday, January 31st 2010

10:00a.m. - 5:00p.m.



Our largest selection of blooming plants

Many unusual and new arrivals

Once again we welcome

James Rose of Cal-Orchid

with a selection of orchids from around the world

Back by popular demand:

Culture Talks Friday & Saturday

Sunday brunch 11:00a.m. - 2:00p.m.

Check our web site for open house updates • www.silvaorchids.com

Visit our web site or call for directions

635 Wayside Rd., Neptune, NJ • 732-922-2635 • www.silvaorchids.com • silvaorchids@optonline.net

Pinelands Orchid Society thanks Susan Taylor, *BellaOnline's* Orchid Editor, for the following article. For more great articles about 'all things orchids', visit:
<http://www.bellaonline.com/site/Orchids>

Winter Orchid Growing Tips

Recommended low temperatures

Different types of orchids require different temperatures during the winter months. In general, Vandas, Dendrobiums and Phalaenopsis will react badly if the temperature goes below 50 degrees Fahrenheit or 10 degrees Centigrade. It is better to keep them in the 55-60 degree Fahrenheit range, or 13-15 degrees Centigrade. Cattleyas can stand cooler temperatures, but if you don't have to do so they will do fine with the same minimums as the others.

Use air temperature water

Keep a supply of water either inside the house or in your greenhouse so that you don't shock your plants with water colder than the ambient temperature. I use plastic milk containers that have been carefully washed out. This is much easier than trying to determine if the water is warmer or colder than the air temperature. Many plants have been killed by water too hot for the plant when the grower is simply trying to take the chill off cold water. Just keep a container handy and the environment will do all the guess work for you!

Reduce water and fertilizer

Winter months in the Northern Hemisphere are cooler and have less light than the summer months. Your plants will need less water and fertilizer since they are not growing at the same pace they were in the warmer months. In general, watering will be about half of what it is in the hottest months and fertilizer requirements will also be about half. If you fertilize every time you water, you will automatically reduce the amount as you reduce watering.

Watch the light levels at windows

For indoor growers, now is the time to check out the light levels that your indoor plants are receiving during the shorter months. Light that may be too strong during the summer months may not be enough during winter months. If you have shading to keep your plants from burning during the summer, it may be time to remove those or at least open them up during the day.

In cold climates be careful of windows

Be careful that you do not allow plants close to windows to have leaves that touch the pane or you can have that plant's leaves freeze even though they are inside. Position your plants at least a 1/2" away from outdoor surfaces to allow for air circulation to keep the air from becoming too cold. Even in winter it is important to keep good air circulation around your plants in order to equalize temperatures.



Update Your E-mail Address



We are no longer sending newsletters through regular mail. Monthly newsletters will be sent **by e-mail only** the week before our scheduled meeting. Please let us know if your e-mail address changes during the year so that you continue to receive newsletters and society announcements during the year.

For those who do not have access to e-mail, our latest newsletter will be posted on the society's web site: www.PinelandsOrchidSociety.org during the week before our regularly-scheduled meeting. If you do not have access to the internet at home, you can log on to our web site at your local library.

E-mail address changes should be sent to our newsletter editor, Christine Jacoby at: roji@comcast.net

**THE ORIGINAL, LARGEST, MOST PRESTIGIOUS ORCHID SHOW IN
THE COUNTRY RETURNS TO MIAMI FOR 2010**

*The 64th Miami International Orchid Show
"Takes Root" February 26 – February 28, 2010*

MIAMI, FL (December 16, 2009) – South Florida will be in full bloom when the South Florida Orchid Society presents the 64th Miami International Orchid Show from February 26 to February 28, 2010. Not to be confused with the numerous other orchid shows that proliferate each spring, the Miami International Orchid Show is the original, and now the largest orchid show and sale in the country. Each year, orchid professionals and hobbyists from across the globe exhibit an exquisite, tropical array of more than 500,000 orchids and orchid-related items for show and for sale. Show organizers anticipate more than 15,000 attendees this year.

"The thing that sets the Miami International Orchid Show apart from the other orchid shows is the sheer size of the Show, the number of items for sale, and the extraordinary design of the exhibits," said Show Director Robert Fuchs. "The Miami International Orchid Show is a top-caliber, professionally produced show where guests get to see and buy the world's finest orchids from the world's top growers."

"Passport to Paradise" sets the theme for the 2010 show. In addition to extraordinary orchid displays, the 64th Miami International Orchid Show features a juried awards competition and thousands of orchids and related items for sale. New to the Show for 2010 will be an art exhibit and corresponding art contest spotlighting orchid imagery in three creative categories: art, sculpture and photography. The contest will be overseen by Terry Mulrooney from the Homestead Art Club and both ribbons and cash prizes will be awarded.

Fuchs also points out that there is much more to do at the Show than stroll among the dramatic displays and purchase a *vanda* or *cattleya*. There will also be a series of informative talks by world-renowned growers, walking tours by knowledgeable Orchid Society members pointing out the highlights of the show, and sales of orchid-related art and collectibles.

Kicking off this year's Show will be a special Premier Party to be held on Thursday, February 25, at 7:30 p.m. The highly anticipated Premier Party provides orchid lovers with a first glimpse at the show's exhibits, the first chance to buy the Show's best orchid plants, and it will also unveil the winners of the sought-after orchid trophies – including the Grand Champion trophy for best orchid in the Show. Ribbons and trophies will also be presented to the winners of the photography and art contests.

Regular hours for the 64th Miami International Orchid Show are:

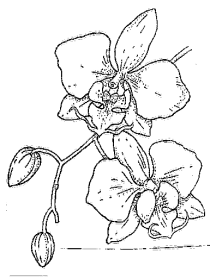
Friday, February 26– 10 a.m. to 8 p.m.

Saturday, February 27 – 10 a.m. to 8 p.m.

Sunday, February 28 – 10 a.m. to 6 p.m.

The 64th Miami International Orchid Show will take place at the Doubletree Miami Mart/Airport Hotel and Convention Center, centrally located at 711 N.W. 72nd Avenue in Miami, immediately south of Miami International Airport. Daily show admission is \$15.00 for adults, which includes a \$5.00 merchandise discount coupon. South Florida Orchid Society members and children 12 and under are free. Tickets for the special Premier Party are \$50.00 per person and must be ordered in advance through the South Florida Orchid Society office at (305) 255-3656.

To inquire about South Florida Orchid Society membership, for additional information on the 64th Miami International Orchid Show, or to order advance or group tickets, please call 305-255-3656 or visit www.sforchid.com.



**Pinelands Orchid Society
2009—2010
Membership/Renewal Form**



Names(s) _____
Last Name(s) First Name(s)

Address: _____

City: _____ State: _____ Zip: _____

Home Phone: _____ Cell Phone: _____

E-mail Address: _____

September 2009 to June 2010 Membership Dues:

Category (check one) **Single \$20.00** **Family \$25.00** (2 + members at same mailing address)

We could not function without the volunteerism of our members. We ask that you volunteer to help out on **at least one** of our committees. It is the best way to advance your orchid-growing knowledge, have fun, and make new friends who share the love of orchids!

We welcome your help on any of our committees that you are interested in. Just ask!

Monthly Meeting: **Welcome Visitors/Interview New Members** **Assist with Raffle**

Newsletter: **Articles/Writing** **Photography**

Show Table: **Set Up (7:00-7:30)** **Assist Judges** **Photography**

Library: **Longwood Gardens Show:** **Holiday Banquet Planning:**

Please make checks out to **Pinelands Orchid Society**.
 You can bring them to the meeting or mail to:

**John DeGood
 4 Cobblestone Court
 Columbus, NJ 08002**



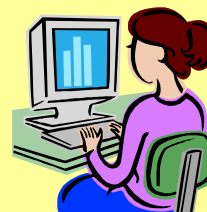
Paphiopedilum Doctor Brian Edwards
(In-Charm White x Pinocchio)
Grown by Valerie Oldham

Pinelands Orchid Society Monthly Meeting Time Schedule

7:00—7:30	Arrival of Show Table Plants
7:30—7:45	Business Meeting/Announcements
7:45—8:15	Break for Refreshments and Culture Corner
8:15—9:00	Speaker or Program Presentation
9:00—9:30	Show Table Critique
9:30—9:45	Raffle



For those members bringing homemade baked goods to our monthly meetings, we ask that you kindly label your item with your name so that our members with food allergies may inquire about the item's ingredients.
Thank you!



The American Orchid Society
now has a free newsletter
for beginners which you can sign up
for at the web site www.aos.org