

May 2007

Pinelands Orchid Society

www.pinelandsorchidsociety.org

P.O. Box 954 - Voorhees, NJ 08043



From the Officers & Trustees

Congratulations to Longwood Gardens Orchid Show Winners!

Thanks to everyone who pitched in to help our society take second place at the Longwood Gardens Orchid Show, from those who did the organizing, the gathering and transport of materials, the building of the exhibit itself, the maintenance of the exhibit during the show weekend, and to all those members who contributed the 80 blooming orchids that made up the display. Congratulations to our members who brought home ribbon awards for their exceptional plants. Once again, we remind everyone that every single plant, from a large specimen to a tiny species, contributes to the overall success of an exhibit. After caring for a plant over many seasons and bringing it to bloom, there is nothing more gratifying than seeing your plant takes its place alongside those of your fellow society members at a show like this!

With the show season now behind us, we are looking ahead to our May 1st meeting and our annual orchid auction. Each year in May, we depend on the proceeds of the auction to fund the following year's society activities, mainly to provide for quality speakers and programs. Our society dues, the lowest in the Mid-Atlantic area, provide only a small portion of what is necessary to run an orchid society.

There are many ways you can help to make our annual auction successful:

- Re-potting your orchids this month? Donate divisions that you may have.
- Re-organizing or downsizing your collection? Donate your "extras" to the auction.
- Offer to assist our auctioneers during the event by coming early that night (6:00 p.m.) to help organize and tag the auction plants or set up our hospitality area.
- Good with numbers? Help our bookkeepers keep track of the auction proceedings throughout the evening.
- And **above all—come to the auction**, bring your friends, and have a good time with your fellow orchid society members!

We are grateful once again this year to Bob Taylor for providing credit card capabilities at the auction. So bring cash, check, or your favorite credit card, and we'll see you all at the auction!

Monthly Meeting Reminder

The next meeting of the Pinelands Orchid Society will be Tuesday, **May 1st, 2007** at 7:30 p.m. at the Woodland Fire Co. Hall, 524 Beechwood Ave. (off Chapel Ave. and Route 38) in Cherry Hill, NJ.

Doors will be open to accept Show Table plants at 7:00 p.m. *

If your last name begins with the letters **R through Z**
Please bring a snack to share.

Please Remember!



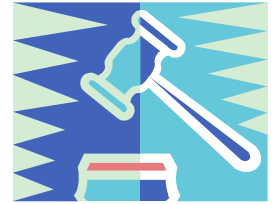
Show Table plants, along with their completed Show Table slips, **must be on the Show Tables by 7:30 sharp** in order to be eligible for judging!

*We will not have the usual Show Table critique this evening due to the auction proceedings.



The Orchid Calendar

- **Saturday, April 28th, 2007**—Join your fellow orchid enthusiasts at the 19th Annual Delaware Valley Orchid Council Speakers' Forum, an all-day event at the Wyndham Hotel in Mt. Laurel, NJ. If you have not pre-registered for this event, you may do so at the door beginning at 8:30 a.m.
- **Tuesday, May 1st, 2007**—Pinelands Orchid Society's monthly meeting and annual **Orchid Auction** at 7:30 p.m. For members who are donating plants for the auction, please send your plant list to Christine by Sunday, April 29th. You may submit your list by telephone (856-273-6547), e-mail (roji@comcast.net), or fax (call first!). Annual election of next year's Officers & Trustees will also take place during the business portion of this meeting.



- **Tuesday, June 12th*, 2007**—Pinelands Orchid Society's last meeting of the 2006-2007 year and our annual **Hoagies & Ice Cream Party** at 7:30 p.m. Annual Show Table Awards winners will be announced. A new feature this year: The Show Table Committee will present a slide show of all of the 2006-2007 candidates for the Best Orchid and the Tony Petralia Awards followed by announcement of this year's winners of both of these awards.

*** This meeting is one week later than usual due to general elections taking place in the facility on June 3rd. ***

Pinelands Orchid Society Officers, Trustees, and Committee Members 2006-2007

President

Christine Jacoby
856-273-6547
roji@comcast.net

Vice President

Bayard Saraduke
856-303-1662
bayard1@comcast.net

Secretary

John DeGood
(609) 324-4448
jdegood@comcast.net

Treasurer

Mike Scott
(856) 547-0386
msscott48@comcast.net

Trustees

Frank Heiler
Bob Taylor
Bob Bookbinder
Valerie Oldham

Newsletter

Christine Jacoby
Lee Renner, Photography

Monthly Meeting Raffle

Florence Lon
cheeky_bugger@hotmail.com

Show Table

Nancy Volpe
nf.volpe@verizon.net
Eileen Willison
ewillison@orchidneedlepoint.com

Donna Boyle

Dnnboyle@yahoo.com

Lee Renner

laluren@comcast.net

Members' Sale Plants

Delores Collier

Show Table Points

Maurice Marietti
mmarietti@comcast.net

Web Site/Library

John DeGood

Orchid Supplies

Bayard Saraduke

Name ID Tags

John DeGood

Sunshine Broker

Anita McGann
(856) 779-0643

Meeting Site Coordinator/

Audio-Visual Mgr.

John Ceresani
ceresani@comcast.net

Hospitality/

Refreshments

Christine Jacoby
Florence Lon
Mark Lovett
Bob Bookbinder



Sunshine Broker

If you know of any member who would appreciate receiving a "get well" note or condolence card during the year, please let Anita McGann know.

Anita can be reached at (856)779-0643.
nitabob7@netzero.com



Pinelands Orchid Society

Highlights from the Longwood Gardens Show

March 30—April 1



Phalaenopsis mannii
Nancy Swindell

Microterangis hariotiana CCE/AOS 92 Points
Bayard Saraduke— Best of Blues & AOS Award



Ernestara Fire Storm
Best of Blues
Sariel Ablaza



Sophrolaeliocattleya Tutankamen 'Pop' AM/JOGA
Bob Taylor



Laeliocattleya Love Sound 'Dogashima'
Nancy Volpe—Best of Blues



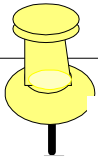
Pinelands Orchid Society Exhibit at Longwood Gardens



For those members bringing home-made baked goods to our monthly meetings, we ask that you kindly label your item with your name so that our members with food allergies may inquire about the item's ingredients. Thank you!

Pinelands Orchid Society Monthly Meeting Time Schedule

6:30 p.m.	Doors open for meeting set up
7:00—7:30	Arrival of Show Table Plants
7:30—7:45	Business Meeting/Announcements
7:45—8:15	Break for Refreshments and “Kathleen’s Korner”
8:15—9:00	Speaker or Program Presentation
9:00—9:30	Show Table Critique
9:30—9:45	Raffle



Reminder for 2007 Philadelphia Flower Show & Longwood Gardens Show Exhibitors:

In order to receive your Show Table points for plants entered in the 2007 Philadelphia Flower Show and the Longwood Gardens Show, please prepare a list of all plants entered, including any ribbon awards received, and give your list to Maurice Marietti at our May 1st meeting.

You may also mail or e-mail your list to:

Maurice Marietti
2 Dickson Drive
Medford, NJ 08055
e-mail: mmarietti@comcast.net

Reminder of Show Table Rules

The Show Table Rules are displayed on the Novice Table at each of our society meetings. We ask that all members read and observe these rules so that our Show Table Committee may perform its task of awarding deserving plants fairly.

Please note especially the rule that states:

“Plants must be owned by the exhibitor for a minimum of three months to be entered in the competitive classes.”