

October 2006

Pinelands Orchid Society

www.pinelandsorchidsociety.org

P.O. Box 954 - Voorhees, NJ 08043



From the Officers & Trustees

At our September 5th meeting, we were entertained by Maurice and Charlene Marietti and Bob Taylor with highlights of their recent "orchid trek" to Ecuador. During their trip, they visited with Dr. Eduardo Sánchez in Cuenca, Ecuador. Dr. Sánchez holds a doctorate in biochemistry from the University of Cuenca-Ecuador and is Professor at the University. He has grown orchids since 1968 and has been micropropagating Ecuadorean orchids in the laboratory at Orquideas de los Andes since 1993. Dr. Sánchez has been a frequent guest lecturer in the United States, speaking at orchid societies and conferences, and organizes personalized orchid tours in Ecuador to explore for orchids in their natural habitat.

We are privileged to have Dr. Sánchez make a special presentation to orchid enthusiasts in our area on Friday, October 13, 2007, at 7:30 p.m., at the Woodland Fire Co. Hall in Cherry Hill. Dr. Sánchez will speak to us on "Exploring Orchids in Ecuador," which he describes as "a wonderful small and giant paradise of life in South America."

There is no registration fee for this event, but in order to plan ahead, please call or e-mail Bob Taylor to let him know that you will be attending this special presentation:

Bob Taylor
609-859-2181
E-mail: orchidman@comcast.net).

It's Time For 2006—2007 Membership Renewal

Membership renewal dues should be paid by November 1st in order to continue receiving the newsletter each month. If you have not already paid your dues, please do so using the renewal form enclosed with this issue. Our membership dues are among the lowest in our area at only \$15 per year (\$20 for 2+ members at the same mailing address).

Monthly Meeting Reminder

The next meeting of the Pinelands Orchid Society will be Tuesday, October 3rd, 2006 at 7:30 p.m. at the Woodland Fire Co. Hall, 524 Beechwood Ave. (off Chapel Ave. and Route 38) in Cherry Hill, NJ.

If your last name begins with the letters **G through L**
Please bring a snack to share.

Doors will be open to accept Show Table plants at 7:00 p.m.



Please Remember!

Show Table plants, along with their completed Show Table slips, **must be on the Show Tables by 7:30 sharp** in order to be eligible for judging!



The Orchid Calendar



- **Saturday, September 30th, 2006**—Fall Open House and Garden Tours at Meadowbrook Farm, 1633 Washington Lane, Meadowbrook, PA, from 10:00 a.m.— 5:00 p.m. Self-guided tours, fall-themed plantings, and free demonstrations throughout the day. Pennsylvania Horticultural Society members receive a 10% discount. For more information, visit www.meadowbrook-farm.com or call 215-887-5900.
- **Tuesday, October 3rd, 2006**—Monthly meeting of the Pinelands Orchid Society, 7:30 p.m. Program: *Advanced Windowsill Growing* presented by Helen Hersh of Mount Prospect Orchids.
- **Friday, October 13th, 2007**—Dr. Eduardo Sánchez of Orquideas De Los Andes, Cuenca, Ecuador, will be speaking on the Orchids of Ecuador at 7:30 p.m. at the Woodland Fire Co. Hall, 524 Beechwood Ave. (off Chapel Ave. and Route 38 in Cherry Hill, NJ). For more information and to register for this event, contact Bob Taylor at: (609) 859-2181 or e-mail Bob at: orchidman@comcast.net.
- **Wednesday, October 18th, 2006**—AOS Regional Judging, Mid-Atlantic Judging Center, Horticultural Center, No. Horticultural Drive & Montgomery Drive, Fairmount Park, Philadelphia, at 7:00 p.m., Details at: www.orchidjudging.com.
- **Saturday, October 21st**—Fall Seminars at Parkside Orchid Nursery. 10:00 a.m.: Introduction to Orchids—A general introduction to the common genera that can be grown in the home. This will include their culture and care. 1 p.m.: Repotting Orchids—A demonstration of various potting methods used for different types of orchid plants. Email: parkside@ptd.net. Phone: 610-847-8039. Web site: www.parksideorchids.com.
- **Saturday, November 4th, 2006**—International Phalaenopsis Alliance 2006 Fall Joint Regional Workshop being held at Parkside Orchid Nursery, Ottsville, PA, 9:30 a.m.—4:00 p.m. Information and registration form available at the IPA website: www.phal.org.
- **Tuesday, November 14th, 2006**—Monthly meeting of the Pinelands Orchid Society, 7:30 p.m. (One week later due to general elections on November 7th). Program: *Hardy Terrestrial Orchids: The Best Kept Secret in the Gardening World* presented by Bill Mathis of The Wild Orchid Company, Carversville, PA.

Pinelands Orchid Society Officers, Trustees, and Committee Members 2006-2007

President

Christine Jacoby
roji@comcast.net

Vice President

Bayard Saraduke
bayard1@comcast.net

Secretary

John DeGood
jdegood@comcast.net

Treasurer

Mike Scott
miscott48@comcast.net

Trustees

Frank Heiler
Bob Taylor
Bob Bookbinder
Valerie Oldham

Newsletter

Christine Jacoby
Lee Renner, Photography

Monthly Meeting Raffle

Florence Lon
cheeky_bugger@hotmail.com

Show Table

Nancy Volpe
nf.volpe@verizon.net
Eileen Willison
ewillison@orchidneedlepoint.com
Donna Boyle
Dnnboyle@yahoo.com
Lee Renner
laluren@comcast.net

Members' Sale Plants

Delores Collier

Show Table Points

Maurice Marietti
mmarietti@comcast.net

Web Site/Library

John DeGood

Orchid Supplies

Bayard Saraduke

Name ID Tags

John DeGood

Sunshine Broker

Anita McGann
nitabob@netzero.com

Meeting Site Coordinator/ Audio-Visual Mgr.

John Ceresani
ceresani@comcast.net

Hospitality/ Refreshments

Christine Jacoby
Florence Lon
Mark Lovett
Bob Bookbinder



We Have a “Sunshine Broker!”

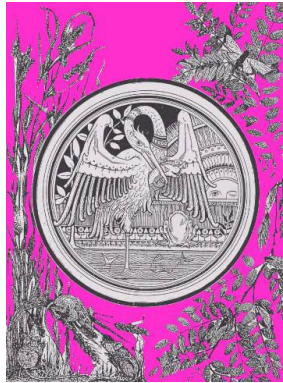
If you know of any member who would appreciate receiving a “get well” note or condolence card during the year, please let Anita know.

Anita can be reached
nitabob7@netzero.com

Upcoming Programs/Speakers

October 3rd, 2007: *Advanced Windowsill Growing*

Presented by Helen Hersh of Mount Prospect Orchids



Helen Hersh has been growing orchids since 1990, when a client started giving her orchids in bloom for delivering pieces of antique furniture. She got hooked very quickly, and the collection grew rapidly to hundreds of plants, then thousands, as flasks of *Paphs* and *Phrags* were being purchased. The eventual goal was to start an orchid business, which eight years ago became a reality with a move to New Jersey to put up a large greenhouse. The result is Mount Prospect Orchids, specializing in fine *Paphiopedilums* and *Phragmipediums*, as well as unusual species. Helen has never forgotten her windowsill days and carries a line of plants that are both unusual and easy for home growers.

Helen is Trustee for twelve years of the Greater New York Orchid Society, which produces the largest orchid show in the country, now held at Rockefeller Center in Manhattan and has written regularly since 1992 for their newsletter on home growing culture. She has been in charge of the floral exhibitions at the New York International Orchid Show for twelve years, now expanded to more than 40 floral exhibitors. Helen is one of the few amateur exhibitors ever granted individual exhibition space at the New York International Orchid Show. After four years of amateur exhibits, she started Mount Propspect Orchids. Helen still exhibits at the New York International Orchid Show as well as others in the New York area and has been giving beginner workshops at the show for twelve years.

A long time member of the American Orchid Society, Helen does volunteer work and is on their Outreach Committee. Helen wrote an article for the AOS Gordon Dillon contest for 1994, and came in second. The judges asked if she would agree to have it published at a later date (only winning articles are ever published). It was published the following spring in the *Bulletin*, (now *Orchids*). This article was also recently republished in the *German Orchid Bulletin*, after being translated into German. Helen has written six more articles that have been published in *Orchids*, including one on *Parvisepalums* and one on *Phragmipediums*. Helen writes with a slant towards windowsill growers.

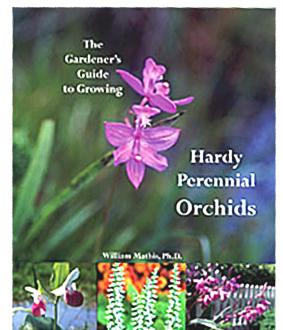
Helen has been lecturing for over ten years to orchid societies around the country including, Milwaukee, Minneapolis, New Hampshire, Massachusetts, Tidewater in Virginia, Pittsburgh, and Delaware, to name a few.

Plants may be pre-ordered from Mount Prospect Orchids' web site: www.MountProspectOrchids.com

November 14th, 2007:

Hardy Terrestrial Orchids: The Best Kept Secret in the Gardening World Presented by William Mathis, Ph.D., The Wild Orchid Company

William Mathis became interested in native terrestrial orchids in 1970 as a graduate student at the University of Arkansas. As a part of his masters program he conducted a series of ecological studies on 'Small Yellow Lady's Slipper' Orchids in Northwest Arkansas. After completing his MS degree in Botany, he moved to the Agronomy Dept and completed a Ph. D. At this point he accepted a job with a major agricultural company and worked as a research scientist and manager for 25 years. He maintained his interest in terrestrial orchids over the years and, in 2000, he set up a lab and started growing a number of species from seed, as well as buying seedlings and mature plants in an effort to accumulate large numbers of 'showy' upland and wetland terrestrial orchids species.



In 2001, when it became apparent that early retirement was a reality, he started **The Wild Orchid Company**, focusing on the production and sales of a variety of terrestrial orchids (North American, European and Asian species) that are hardy in Southeastern Pennsylvania. Currently, he is working with hybridization and induced polyploidy of several *Bletilla*, *Cypripedium*, *Calopogon*, *Arethusa* and *Calanthe* species in an effort to select specific plants for horticultural use. In 2005, Dr. Mathis wrote and published a book, ***The Gardener's Guide to Growing Hardy Perennial Orchids***, which is a 'How to' book using a non-technical and practical approach to present the basic requirements for successfully growing hardy perennial orchids.

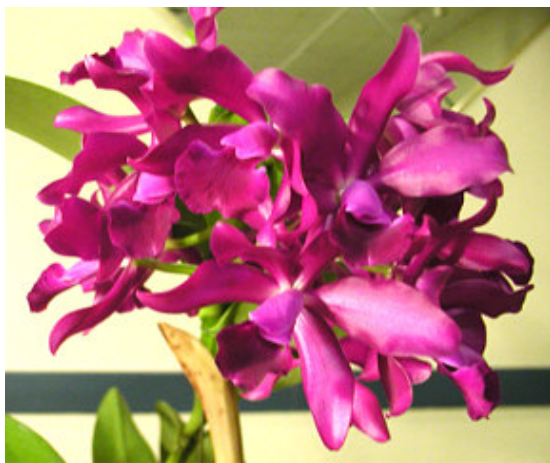
This presentation is designed to give the average gardener or orchid enthusiast a general overview of the cultural requirements for successfully growing hardy terrestrial orchids. Several different species are discussed in detail. The discussion is divided into three categories, upland, wetland and transition species, and includes soil amendments, soil mixes, fertilizer use, watering requirements, etc. for the specific groups.

Plants may be pre-ordered from web site: www.wildorchidcompany.com

Pinelands Orchid Society

Show Table Highlights

September 5, 2006



C. Bactia 'Grape Wax'
Kathleen Harvey



Paph. victoria-regina
Frank Heiler



Blc. Memoria Vida Lee 'Limelight'
Kathleen Harvey



Miltonia species
Bayard Saraduke



Odm. Margarete Holm 'Alpine'
Traci Beden-Tambussi



Lc. Garrett Collins
(*C. Little Dipper* x *Lc. Mini Purple*)
Sariel Ablaza



Blc. Golden Tang
Kathleen Harvey



For those members bringing home-made baked goods to our monthly meetings, we ask that you kindly label your item with your name so that our members with food allergies may inquire about the item's ingredients. Thank you!

Pinelands Orchid Society Monthly Meeting Time Schedule

6:30 p.m.	Doors open for meeting set up
7:00—7:30	Arrival of Show Table Plants
7:30—7:45	Business Meeting/Announcements
7:45—8:15	Break for Refreshments and “Kathleen’s Korner”
8:15—9:00	Speaker Presentation
9:00—9:30	Show Table Critique
9:30—9:45	Raffle



Orchid Potting Supplies



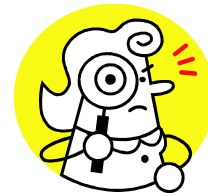
We will be refreshing our orchid potting supplies in the next few months. There will be several different sizes of plastic pots, wooden and wire plant stakes, green string, and insecticidal soap concentrate available for sale at our monthly meetings. Please see our Vice President, Bayard Saraduke, to purchase supplies.

In addition to the above items, Bob Taylor, a POS member and our local *Aussie Gold* representative, will have the following items available for sale at our monthly meetings:

- **Taylor Made** Orchid Potting Mix: \$12.00 per bag. **Taylor Made** is Bob’s own formulation all-purpose orchid potting mix used by many of our members.



- Green or Brown coated stakes with safety tip: 10 for \$2.00
- **Aussie Gold**: 10 lb. bags for \$16.50
- Butterfly clips or Bug clips: 5 for \$1.00 .
- **Physan 20**: \$12.50



Don't forget to bring your orchid questions to **Kathleen's Korner** during the refreshment break. Please cover your ailing plant in plastic before bringing it for diagnosis.

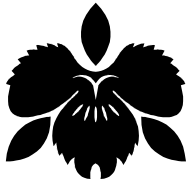
POS Library

www.pinelandsorchidsociety.org/library.html

Our list of library holdings is now available on our web site. Should you wish to borrow any of these volumes, please contact John DeGood by telephone or e-mail. The book will be delivered to you at the next monthly meeting.

Jdegood@comcast.net





Pinelands Orchid Society
P. Box 954
Voorhees, NJ 08043

October 2006 Newsletter



**We're on the Web:
pinelandsorchidsociety.org**

