

January 2007

Pinelands Orchid Society

www.pinelandsorchidsociety.org

P.O. Box 954 - Voorhees, NJ 08043



From the Officers & Trustees

The Flower Show Season is Coming!

As we begin the new year, our orchid society is gearing up for the flower show season here in the Philadelphia area. The Philadelphia Flower Show is on our calendars for the week of March 4 – 11, and we are hoping that more of our members will be entering their flowering plants in the Orchid Classes this year. You will recall that last year, Pinelands had four members who received blue ribbons in the Novice Classes, so 2007 may be your year to bring home a coveted blue ribbon from The Flower Show! At our January 2nd society meeting, we will be discussing The Flower Show – how and when to pre-register your plants, and how to prepare them specifically for this show.



We will also be presenting tips for preparing your orchids for entry into our society's exhibit in the Longwood Gardens Orchid Show on March 30 – April 1. This show, sponsored by the Southeastern Pennsylvania Orchid Society, will once again be held in the wonderful East Conservatory at Longwood Gardens. Pinelands will have its own 100-square-foot exhibit this year, and we are counting on you to enter your flowering orchids in this fabulous show.

Planning, organizing, and staging an orchid exhibit from start to finish requires many volunteers and can be a time of great fun and camaraderie. Your society Officers and Trustees welcome your involvement in this show, whether you have just a small amount of time to give or your flowering orchids to enter.

One of our members, Marlene Smith, lost a favorite bracelet sometime during our December holiday party. It is a silver "Nomination" charm bracelet that she is anxious to have returned to her. If anyone found the bracelet during the evening of our party, please contact Marlene Smith at: (856) 697-1508.

Monthly Meeting Reminder

The next meeting of the Pinelands Orchid Society will be Tuesday, **January 2nd**, 2007 at 7:30 p.m. at the Woodland Fire Co. Hall, 524 Beechwood Ave. (off Chapel Ave. and Route 38) in Cherry Hill, NJ.

Doors will be open to accept Show Table plants at 7:00 p.m.

If your last name begins with the letters **S through Z**
Please bring a snack to share.

Please Remember!



Show Table plants, along with their completed Show Table slips, **must be on the Show Tables by 7:30 sharp** in order to be eligible for judging!



- **Tuesday, January 2nd, 2007**—Pinelands Orchid Society's monthly meeting at 7:30 p.m. Program: Preparing Your Orchids for the Show Season—A Primer on Grooming & Staking presented by members of the society.
- **Wednesday, January 31st, 2007**—Pre-entry registration deadline for entering horticulture and orchid classes at the Philadelphia Flower Show. See the Flower Show web site for details: www.theflowershow.com.
- **Tuesday, February 6th, 2007**—Pinelands Orchid Society's monthly meeting at 7:30 p.m. Program: Bayard Saraduke speaking on a topic to be announced.
- **Saturday, February 17th, 2007**—The 27th Annual NCOS (National Capital Orchid Society) Paphiopedilum Forum at the U.S. National Arboretum, Washington, D.C. This year's Paph Forum will feature internationally-renowned speakers, sales by leading vendors, a show table featuring hundreds of slippers in bloom, and AOS judging. Registration for the 2007 Paph Forum will begin in December, 2006 (Attendance is limited to the first 140 registrants) and will be available online at www.ncos.us/ncos/.



1957 Celebrating **50** Years 2007

19th Annual Open House

Thursday, January 25 - Sunday, January 28, 2007
10:00a.m. - 5:00p.m.

New this year by popular request:

Culture Talks

Friday at 1:00p.m. - James Rose of Cal-Orchid

Saturday at 11:00a.m. - Mark Hachadourian
Curator of New York Botanical Gardens and an AOS Judge

Saturday at 1:00p.m. - Kyle Saunders
Award winning orchid hobbyist will talk on Broughtonia Sanguinea and its hybrids - Perfect cattleyas in perfect miniature

Sunday brunch 11:00a.m. - 2:00p.m.

Check our web site for open house updates • www.silvaorchids.com

Visit our web site or call for directions

635 Wayside Rd., Neptune, NJ • 732-922-2635 • www.silvaorchids.com • silvaorchids@optonline.net



A Guide to Nomenclature, Abbreviations, and Pronunciations

Orchids from the December Show Tables:

Ocdm. = *Odontocidium* (oh-dohn-toh-SID-ee-yum)
An orchid genus made up of *Odontoglossum* x *Oncidium*.

Psh. = *Prosthechea* (pross-THECK-ee-ah) A natural orchid genus.

Do you have an *Encyclia cochleata* in your collection? Recent name changes have caused plants once placed in the genus *Encyclia* to now be in the genus *Prosthechea*. In her article entitled *Encyclia Enthusiasts: A Specialty Group Caters to the Needs of its Members* published in the August 2006 issue of *Orchids*, Isabel Lopatin explains that there are still many species that should no longer be labeled *Encyclia*, such as *Encyclia cochleata*, *Encyclia prismatocarpa*, and *Encyclia vitellina*, all three of which are now placed in the genus *Prosthechea*.

Ms. Lopatin points out some characteristics that will help you determine if your orchid labeled *Encyclia* really is one: No *Encyclia* inflorescence arises from a sheath, no *Encyclia* has nonresupinate* flowers, and no *Encyclia* has flattened pseudobulbs.

The orchid shown in the photo was purchased with a tag that read *Encyclia boothiana*, but it should be labeled *Prosthechea boothiana*. The plant has both flattened pseudobulbs and the inflorescences arise from sheaths.



Prosthechea boothiana
(Formerly classified as
Encyclia boothiana)

For more information or to join the *Encyclia Enthusiasts*, check out their web site at www.encyclias.org.

* resupinate = inverted; appearing as if upside down.

Pinelands Orchid Society Officers, Trustees, and Committee Members 2006-2007

President

Christine Jacoby
856-273-6547
roji@comcast.net

Vice President

Bayard Saraduke
856-303-1662
bayard1@comcast.net

Secretary

John DeGood
(609) 324-4448
jdegood@comcast.net

Treasurer

Mike Scott
(856) 547-0386
msscott48@comcast.net

Trustees

Frank Heiler
Bob Taylor
Bob Bookbinder
Valerie Oldham

Newsletter

Christine Jacoby
Lee Renner, Photography

Monthly Meeting Raffle

Florence Lon
cheeky_bugger@hotmail.com

Show Table

Nancy Volpe
nf.volpe@verizon.net
Eileen Willison

ewillison@orchidneedlepoint.com
Donna Boyle

Dnnboyle@yahoo.com
Lee Renner
laluren@comcast.net

Members' Sale Plants

Delores Collier

Show Table Points

Maurice Marietti
mmarietti@comcast.net

Web Site/Library

John DeGood

Orchid Supplies

Bayard Saraduke

Name ID Tags

John DeGood

Sunshine Broker

Anita McGann
(856) 779-0643

Meeting Site Coordinator/ Audio-Visual Mgr.

John Ceresani
ceresani@comcast.net

Hospitality/ Refreshments

Christine Jacoby
Florence Lon
Mark Lovett
Bob Bookbinder



Sunshine Broker

If you know of any member who would appreciate receiving a "get well" note or condolence card during the year, please let Anita McGann know.

Anita can be reached at (856)779-0643.
nitabob7@netzero.com



Blc. Chia Lin 'New City'
Bayard Saraduke
Best of Table

Pinelands Orchid Society

Show Table Highlights

December 5th, 2006



Phrag. Sunset Glow
Frank Heiler



Paph. Fumi's Gold
Kathleen Harvey



Mtssa. Izumi 'Charles Marden Fitch'
Donna Boyle



Paph. William Ambler
Christine Jacoby



Blc. Goldenzelle 'Prelude'
Bayard Saraduke



Den. Thanaid Stripes 'Jumbo'
Bob Bookbinder



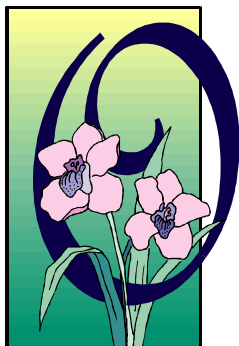
Odcdm. Tiger Crow 'Golden Girl'
Anita McGann



For those members bringing homemade baked goods to our monthly meetings, we ask that you kindly label your item with your name so that our members with food allergies may inquire about the item's ingredients. Thank you!

Pinelands Orchid Society Monthly Meeting Time Schedule

6:30 p.m.	Doors open for meeting set up
7:00—7:30	Arrival of Show Table Plants
7:30—7:45	Business Meeting/Announcements
7:45—8:15	Break for Refreshments and “Kathleen’s Korner”
8:15—9:00	Speaker or Program Presentation
9:00—9:30	Show Table Critique
9:30—9:45	Raffle



Save These Dates in 2007:

January 31—Pre-entry deadline for online and mail registration for Horticulture & Orchid Entries in the 2007 Philadelphia Flower Show. Online instruction manual is available at www.philadelphiaflowershow.com beginning December 1.

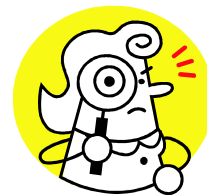
February 8—11—Deep Cut Orchid Society 10th Annual Show at Dearborn Market, Holmdel, NJ.

March 4—11—The Philadelphia Flower Show: Legends of Ireland. Advanced tickets may be purchased at www.theflowershow.com beginning December 1.

March 30—April 1—Longwood Gardens Orchid Show & Sale. Pinelands Orchid Society is planning an exhibit in this show.

April 18—22—New York International Orchid Show at Rockefeller Center, NYC.

April 28—Delaware Valley Orchid Council’s Speakers’ Day, Wyndham Hotel, Mt. Laurel, NJ. Registration form in this newsletter.



Don't forget to bring your orchid questions to **Kathleen's Korner** during the refreshment break. Please cover your ailing plant in plastic before bringing it for diagnosis.

POS Library

[www.pinelandsorchidsociety.org/
library.html](http://www.pinelandsorchidsociety.org/library.html)

Our list of library holdings is now available on our web site. Should you wish to borrow any of these volumes, please contact John DeGood by telephone or e-mail. The book(s) will be delivered to you at the next monthly meeting.

Jdegood@comcast.net
(609) 324-4448