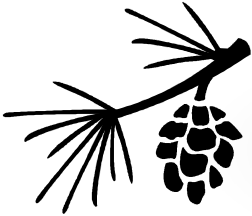


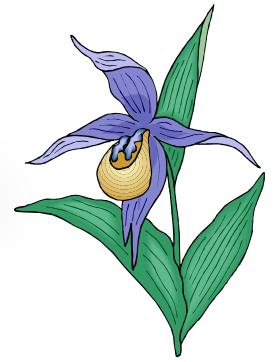
September 2008



# Pinelands Orchid Society

[www.pinelandsorchidsociety.org](http://www.pinelandsorchidsociety.org)

P.O. Box 954 - Voorhees, NJ 08043



## Welcome Back Pinelands Members!

Mark your calendars for Tuesday evening, September 2nd, for our first meeting of 2008-2009. Bring your blooming plants and your enthusiasm as we start our society's 24th consecutive year!



We are starting off the year with several vacancies in our various committees, and we are asking every member to consider helping out on at least one of our committees.

- The **Hospitality Committee** cannot function with only one or two members, so if you enjoy the monthly coffee/tea and beverage service, let this be the year that you volunteer to help out.
- The **Plant Raffle** that takes place during our meetings needs someone to take charge. This job is an easy way to help your society each month by selling raffle tickets during the meetings.
- We also need someone to take responsibility for selling **Orchid Supplies** during our monthly meetings. This, too, is not a difficult job and could be your way of giving something back to your orchid society.
- We would like to have someone function in a **Welcome Wagon** role when we have prospective new members visiting our monthly meetings by giving them a folder of membership information.
- Our **Show Table Committee** needs more member involvement. Consider volunteering to assist at our Show Table judging by placing ribbons, keeping track of show table registration slips, and assisting our photographer each month. This is a great way to learn about the judging process and it's educational as well.

Let us know how you can help our society this year when you renew your membership. This year's membership form is printed in this issue of the newsletter.

See you in September!

### Monthly Meeting Reminder

The first meeting of 2008-2009  
will be held on  
Tuesday, **September 2nd, 2008**  
at 7:30 p.m., at the Woodland Fire Co. Hall,  
524 Beechwood Ave., Cherry Hill, NJ.

If your last name begins with the  
letters **A** through **E**  
please bring a snack to share.  
The society will provide beverages.



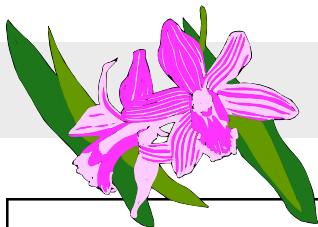
**Doors will open to accept  
Show Table  
Plants at 7:00 p.m.**

#### **Please Remember:**

Show Table plants, along with their  
Completed Show Table slips, must be  
on the Show Tables  
by **7:30 p.m. sharp** in order to be  
eligible for judging!

### Pinelands Orchid Society Monthly Meeting Time Schedule

- 6:30 p.m. Doors open for meeting set up
- 7:00-7:30 Arrival of Show Table Plants
- 7:30 Business/Announcements
- 7:45 Refreshments/Social Time/  
Culture Corner
- 8:15 Program/Speaker
- 9:00 Show Table Critique
- 9:30 Raffle



# The Orchid Calendar

- **Tuesday, September 2nd**—Pinelands Orchid Society’s first monthly meeting of the 2008-2009 year! Educational program presented by members of Pinelands Orchid Society.
- **Saturday, September 13th**—International Phalaenopsis Alliance Fall Joint Meeting hosted by Parkside Orchid Nursery — See Page 3 of this newsletter for more information.
- **Tuesday, October 7th** — Pinelands Orchid Society’s monthly meeting. Program to be announced.
- **Friday to Sunday, October 17th to 19th**—Thanks to the leadership of Longwood Gardens and the DuPont family, the American Orchid Society will be returning to Longwood Gardens for its 2008 Members Meeting. The meeting will take place at the Hotel Dupont in Wilmington, DE, and Longwood Gardens, Kennett Square, PA, a distance of only 10 miles. It has been more than 60 years since the AOS last met at Longwood and everyone involved is excited, not only about October, but for the relationship and bond these two great organizations are developing for the future. Go to the AOS web site to register for this event.



American Orchid Society

*Longwood Gardens*

## Pinelands Orchid Society Officers, Trustees, and Committee Members 2008-2009

### President

Bayard Saraduke  
bayard1@comcast.net  
856-303-1662

### Vice President

Mike Scott  
856-547-0386  
mscott48@comcast.net

### Secretary

Betsy Sullivan  
betsyander@gmail.com  
856-234-8608

### Treasurer

John DeGood  
(609) 324-4448  
jdegood@comcast.net

### Trustees

Ro Hill  
Marie Wann  
Christine Jacoby

### Speakers/Programs

Vacant

### Newsletter

Christine Jacoby  
Betsy Sullivan

### Show Table

Donna Boyle  
dnnboyle@yahoo.com  
Bob Taylor  
orchidman@comcast.net  
Lee Renner  
laluren@comcast.net  
Mike Scott/Photography

### Members' Sale Plants

Delores Collier

### Monthly Meeting Raffle

Vacant

### Web Site/Library/ Name Tags

John DeGood

### Orchid Supplies

Vacant

### Sunshine Broker

Anita McGann  
(856) 779-0643

### Meeting Site Coordinator/ Audio-Visual Mgr.

John Ceresani  
[ceresani@comcast.net](mailto:ceresani@comcast.net)

### Hospitality/ Refreshments

Christine Jacoby  
Anita & Bob McGann  
Paper Goods—Vacant



### Sunshine Broker

If you know of any member who would appreciate receiving a “get well” note or condolence card during the year, please let Anita McGann know.

Anita can be reached at  
(856)779-0643.  
[rcm51402121@yahoo.com](mailto:rcm51402121@yahoo.com)

You are invited to attend the  
**INTERNATIONAL  
PHALAENOPSIS ALLIANCE  
2008 FALL JOINT REGIONAL MEETING**

**Saturday, September 13, 2008**  
Hosted by Parkside Orchid Nursery  
2503 Mountainview Drive,  
Ottsville, PA 18942

Telephone: (610) 847-8039  
E-mail [parkside@ptd.net](mailto:parkside@ptd.net)



Join us for a day of perfecting the art as well as the science of growing Phantastic Phals. Parkside Orchid Nursery, Ottsville, PA will serve as our venue for the Joint Northeast IPA Regional Meeting on Saturday September 13, 2008, RSVP requested. We are pleased to welcome phalaenopsis experts Molly Dugger Brennan, Susan Gange, Carri Raven-Riemann, and Patti Lee to this daylong event which will include a discussion group, and a mini-auction. A fee of \$15 will cover the cost of morning refreshments and a catered lunch. We welcome all Orchidists, IPA members & non-members alike. In addition, this annual event will provide you with the opportunity to purchase plants from the following vendors: Parkside Orchids, Brennans' Orchids, The OrchidPhile, and Stony Brook Orchids.

**PROGRAM**

- 9:00 - 10:00 am Morning refreshments. Sales area open.
- 10:00 - 10:45 am **Molly Dugger Brennan** -  
*'Tips & Tricks, Tried & True'*
- 10:45 - 11:00 am Questions and Answers
- 11:00 - 11:15 am Mid-morning Break
- 11:15 - 11:45 am **Susan Gange** -  
*'An alternate way of growing Phab Phals'*
- 11:45 - 12:00 pm Questions and Answers
- 12:00 - 1:00 pm Lunch Break. Sales area open.
- 1:00 - 1:30 pm Auction to raise money for future meetings
- 1:30 - 1:45 pm **Carri Raven-Riemann** -  
*'Latest 'Phalaenopsis creations' from the March 2008 Taiwan Orchid Show.'*
- 1:45 - 2:15 pm **Patti Lee** -  
*'The newest trends in lights'*
- 2:15 - 2:45 pm Ask the Experts: Roundtable Discussion.  
Bring your questions and problems.  
(Please keep your plants in clear, plastic bags.)

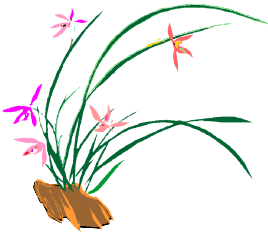
2:45 - 3:30 pm Sales area open

PLEASE NOTE: Registration, by mail or phone, is extremely important so that sufficient food can be provided for all!

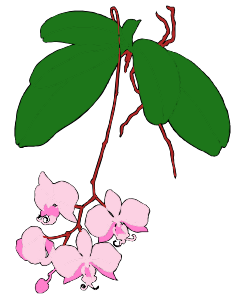
FOR RESERVATIONS: Contact Marilyn Shapiro -

E-mail at [mlshap2@juno.com](mailto:mlshap2@juno.com) or

Tel: 212-831- 3076 or 917-881-7181



**Pinelands Orchid Society**  
**2008—2009**  
**Membership/Renewal Form**



Names(s) \_\_\_\_\_  
Last Name(s) First Name(s)

Address: \_\_\_\_\_  
 \_\_\_\_\_

City: \_\_\_\_\_ State: \_\_\_\_\_ Zip: \_\_\_\_\_

Home Phone: \_\_\_\_\_ Cell Phone: \_\_\_\_\_

E-mail Address: \_\_\_\_\_ Please send my newsletter by USPS

**September 2008 to June 2009 Membership Dues:**

Category (check one) **Single \$20.00**  **Family \$25.00** (2 + members at same mailing address)

We could not function without the volunteerism of our members. We ask that you volunteer to help out on **at least one** of our committees. It is the best way to advance your orchid-growing knowledge, have fun, and make new friends who share the love of orchids!

We welcome your help on any of our committees that you are interested in. Just ask!

**Monthly Meeting:**    **Welcome Visitors/Interview New Members**     **Assist with Raffle**

**Hospitality/Refreshments:**    **Set Up (7:00-7:30)**     **Clean Up**

**Speakers/Programs:**     **Sell Supplies at Monthly Meetings:**

**Show Table:**    **Set Up (7:00-7:30)**     **Assist Judges**     **Photography**

**Library:**     **Longwood Gardens Show:**     **Holiday Banquet Planning:**

Please make checks out to **Pinelands Orchid Society**.  
 You can bring them to the meeting or mail to:

**Betsy Sullivan, Membership Secretary**  
**122 W. Maple Ave., Moorestown, NJ 08057**

## Pinelands Orchid Society Show Table Rules (Revised August 2007)

At each regularly scheduled monthly meeting of the Pinelands Orchid Society, there will be a Show Table on which members may display plants. The Show Table will be judged by the Show Table Committee and individuals selected from the general membership. Plants will be judged according to the following classes and rules:

### **Competitive Classes:**

*Cattleya*   *Cattleya-miniature*   *Cymbidium*   *Dendrobium*   *Oncidium Alliance*   *Paphiopedilum*  
*Phalaenopsis*   *Phragmipedium*   *Vanda*   Novice   Arrangement   Misc. Species   Misc. Hybrids

The Arrangement class includes arrangements of orchid plants or cut orchid flowers.

The Artistic Class includes orchid-related artwork.

The Novice class is open to those members who have been growing for three years or less, or who have won less than three blue ribbons on the show table.

There is also a non-competitive Open class for recently purchased plants and for those who wish to exhibit their plants without competing.

Plants will be further separated by growing conditions. Blue Show Table slips indicate a windowsill grower, and white indicate a greenhouse grower.

### **Rules:**

All plants to be judged must be registered and on the Show Table by the start of the meeting (7:30 p.m.).

Registration slips must be complete and legible and must be the standard form supplied by the club.

Dues must be paid before a member can exhibit.

Plants must be owned by the exhibitor for a minimum of three months to be entered in the competitive classes.

Once a plant receives an award, the same plant may not be re-entered into the competitive classes unless it has a new inflorescence.

Plants must be free of disease and pests.

In each competitive class, judges may award any number of plants, including none, based upon individual merit.

Classes may be combined or separated at the discretion of the judges, depending upon the quantity of available plants on any one night.

### **Recognition:**

- Ribbon awards will be announced during the Show Table critique.
- Special Award candidates will be selected and photographed each month. The Show Table Committee will hold a meeting in May to review the candidates for the Special Awards and will make their selection for each award. The Special Awards winners will then be announced at the June meeting along with a photo slide presentation. Special Awards winners will be presented with gift certificates for their choice of local orchid nurseries.

### **Ribbon Awards:**

Special Recognition (Purple Rosette)

First Place (Blue Ribbon)

Second Place (Red Ribbon)

Third Place (White Ribbon)

Honorable Mention (Green Ribbon)

### **Special Awards:**

Best Greenhouse-Grown Plant

Best Indoor/Windowsill Plant

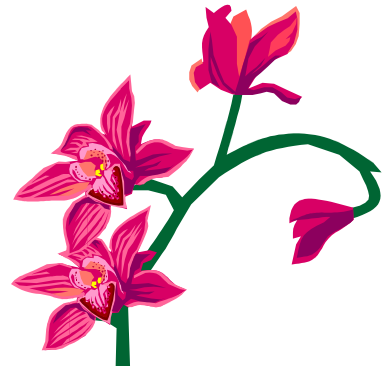
Tony Petralia Award for Best *Paphiopedilum/Phragmipedium*

Pat DiSanto Award – Best Miscellaneous Hybrid or Species

Most Improved Grower of the Year

Orchid Digest Trophy – Outstanding Service to the Society/Member of the Year

People's Choice Award



## Fall Orchid Growing Tips

By Susan Taylor, Orchids Editor for Bella Online

<http://Orchids.bellaonline.com>

Reprinted with permission



### ***Phalaenopsis* or Moth Orchids**

*Phals* are one of the easiest of orchids to encourage to rebloom if you know that they need about a month of cool night time temperatures in order to initiate spikes. As the weather cools in your area, let the plants get night temperatures of 60-70 degrees Fahrenheit. You should see the inflorescence(s) start to appear either at the bottom of the plant or below one of the bottom leaves. When it reaches approximately six inches or 15 centimeters, start staking to hold the inflorescence. Be sure to keep the plant in the same position in relation to light source or you will have a twisted look to the flowering.

### ***Cattleyas***

Many *Cattleyas* are fall and winter bloomers and these particularly need bloom booster fertilizers to provide the best display. Those that bloomed in the spring will respond to plain water rather than fertilizer at this time of year until they start growing in the spring. Now is the time to clean up these types to make sure that they harbor no mysterious insects or fungus. Take off old sheaths, clean the leaves with lemon juice to remove any chemical residues to allow maximum photosynthesis.

### ***Dendrobiums***

Some *Dendrobiums* will lose all their leaves in the fall, others will lose some of their leaves on back bulbs; but you shouldn't be losing all the leaves on old pseudobulbs. If this is happening, then you need to spray with a fungicide like *Consan* or *Physan* to keep from losing all old leaves. This will not kill the plant, but you will be left with only one growing lead and a rather odd looking plant. Clean up the plants and be sure that the new growths are staked well.

### **Adjust your watering and fertilizing schedule**

Fall and spring are the hardest times of year to water orchids, especially outdoors or in a greenhouse. Reduced heat and fewer daylight hours cause your plants to grow more slowly and therefore need less water. You need to be very careful so that you do not overwater and drown the roots. After you've watered thoroughly, pick up one of your pots and feel how heavy it is. Then when your normal watering day comes, feel the weight of the pot again, it should be much lighter. Check the medium; if it's dry then you know how the dry pot feels. It's best to make a note on your calendar when you water and fertilize so you can keep up with a normal schedule.

### **Move your plants around when you take off shade cloth**

When you take off your shade cloth in the fall, you will need to reassess where your plants are with the new amount of light. *Phalaenopsis* which could grow nicely with shade cloth will suddenly be in too much light. Move them under other plants or into a separate area with more shade. As you move your plants, check them for insects, snails, molds, etc.

### **Fungus, Insects and Air Circulation**

Be sure to keep your air circulation going 24/7 even though the temperatures have moderated. With cooler temperatures fungi will try to take over. Spray once a month with a fungicide recommended for your area. I also recommend an insecticide spray once a month, preferably with systemic chemicals as there are many insects which will try to move into the greenhouse with the cooler weather. If moving plants inside, be sure to spray and clean them up before bringing them in -- you don't want to introduce any new bugs!

### **Allow deciduous orchids to lose their leaves and dry out**

Some *Dendrobiums*, *Cychnoches*, and other orchids will lose their leaves during the winter months. As leaves die, cut back on watering until all the leaves are gone and then move them to a portion of the growing area where they will receive no watering until growth has started back up in the spring. Many of these types of orchids will rot if they receive ANY water, so be very careful. Humidity is fine; watering is not.



*New  
For  
2008-2009 !*



For those members bringing homemade baked goods to our monthly meetings, we ask that you kindly label your item with your name so that our members with food allergies may inquire about the item's ingredients.  
Thank you!



Don't forget to bring your orchid questions to our **Culture Corner** during the refreshment break. Please cover your ailing plant in plastic before bringing it for diagnosis.

# *The People's Choice Award*

Each month, members will vote for their favorite plant on our Show Tables.

Write the name of the plant, along with your name, and place your vote in the People's Choice Award basket.

The winning monthly candidates will be photographed, and members will vote in June for the Annual People's Choice Award.